

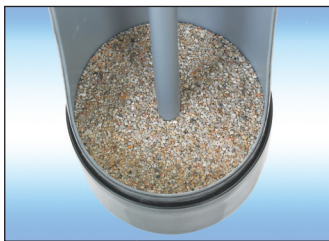
Filox™ Backwashing Filters with CK10 Valves and Vortech Tanks

Whole House Filters For Iron, Hydrogen Sulfide And Manganese.

Iron, Manganese and Hydrogen Sulfide are common elements found in your water and can be a nuisance causing stains in sinks, bathtubs, toilets, driveways and even the side of your house. In addition Iron, Manganese and Hydrogen Sulfide release unpleasant odors and tastes to your water supply. FILOX™, a non-chemical oxidizing media is the answer to these water problems.

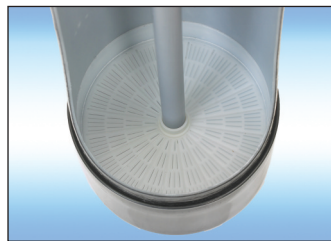
System Advantages

- Highest flow rate of any Iron removal media.
- No oxidizing chemicals needed for regeneration.
- High efficiency with minimum of 80% Manganese dioxide for enhanced performance and capacity.
- Effective, from 5.0 to 9.0 pH.
- System is easy to program, with 10 pre-programmed regeneration cycles to optimize water treatment.
- May require additional oxidizing agents depending on water conditions.
- 10 year warranty on tank.
- 5 year warranty on valve.
- Made in USA.



Standard Mineral Tank

Standard tanks use gravel under bedding, which adds weight and cost. Also, re-bedding is more difficult, should riser tubes pull out of the gravel bed.



Vortech™ Mineral Tank

No gravel under bedding is required, reducing weight and cost. Also, riser tubes are permanently attached, so they cannot pull out during re-bedding.

**Best Seller.
Try It Today!**



NOTE: The use of chemicals and oxidizers, such as chlorine potassium permanganate and oxygen may be required to provide the optimal treatment for Iron, Hydrogen Sulfide and Manganese.

Models

Model No.	Valve	Mineral Tank Size	Media Cubic Ft.	Gravel (Lbs)	Service Flow (GPM)	Drop (PSI)	Back Wash (GPM)	Floor Space LxWxH
NF09-W100F	Time clock	9X48	1	None	6	< 15	5.3	16X10X55
NF10-W100F	Time clock	10X54	1.5	None	9	< 15	7.5	16X11X62
NF12-W100F	Time clock	12X52	2	None	12	< 15	10	17X13X60
NF14-W100F	Time clock	14X65	3	None	18	< 15	15	18X15X74
NF16-W100F	Time clock	16X65	4	None	24	< 15	20	20X17X74